



Government of India
Ministry of Earth Sciences
India Meteorological Department



Press Release
Date: 28th May 2026
Time of Issue: 1530 hours IST

Subject: (i) The prevailing heat wave to severe heat wave conditions is likely to abate from many parts of Northwest India from today however, it is likely to continue over some parts of Rajasthan, Vidarbha, East Madhya Pradesh and reduce significantly from tomorrow.

(ii) Isolated heavy rainfall likely over Northeast and adjoining East India during next 2-3 days and over south peninsular India today, the 28th May.

(iii) Moderate to Severe Thunderstorm activity with squally wind speed likely over Northwest India, Central India and East India during 28th – 31st May.

Advance of Southwest Monsoon 2026 (Annexure I):

- ❖ Southwest monsoon has further advanced into some more parts of southwest & southeast Arabian Sea, some parts of Lakshadweep area, some more parts of southwest, southeast and eastcentral Bay of Bengal, remaining parts of Andaman Sea and some parts of westcentral Bay of Bengal on today, the 27th May 2026.
- ❖ Conditions are favourable for further advance of southwest monsoon into some more parts of southwest & southeast Arabian Sea, Lakshadweep area, southwest, eastcentral & westcentral Bay of Bengal, remaining parts of southeast Bay of Bengal and some parts of northeast Bay of Bengal during next 2-3 days.
- ❖ The Northern Limit of Monsoon passes through 9°N/60°E, 8.5°N/65°E, 8°N/70°E, 7.5°N/75°E, 8°N/80°E, 11°N/85°E, 15°N/90°E, 19°N/95°E and 21°N/97°E as on 27th May 2026.

Realised weather during past 24 hours ending at 0830 hours IST of today, the 28th May, 2026:

- ❖ **Heavy rainfall (7-11 cm)** has been recorded at isolated places over Odisha, Kerala & Mahe & Assam
- ❖ **Thunderstorm accompanied with Squally/Gusty winds with speed reaching 70-100 kmph** prevailed at isolated places over Nagaland, Manipur, Mizoram & Tripura, Odisha, Jharkhand ; **with speed reaching 50-70 kmph** over Chattisgarh, Gangetic West Bengal, Telangana, Coastal Andhra Pradesh & Yanam, West Madhya Pradesh ; **with speed reaching 40-50 kmph** over Punjab, East Madhya Pradesh, Madhya Maharashtra, Jammu-Kashmir-Ladakh, Uttarakhand, Haryana, Tamil Nadu, Puducherry & Karaikal, Andaman & Nicobar Islands
- ❖ **Hailstorm** occurred at isolated places over Marathwada, Odisha.
- ❖ **Heat wave to severe heat wave conditions** prevailed in isolated pockets over East Uttar Pradesh, Rajasthan; **Heat wave conditions** prevailed at many places over West Rajasthan; at a few places over Uttar Pradesh; at isolated places Vidarbha Haryana-Chandigarh-Delhi East Rajasthan, East Madhya Pradesh.

Temperature Conditions during past 24 hours till 0830 hours IST of today:

- ❖ **Day/Maximum Temperatures (as on 27-05-2026):** Yesterday, Maximum temperatures were in the range of 43-47°C over parts of Northwest India, central India, adjoining Uttar Pradesh, east and north Peninsular India and 40-43°C over rest parts of the country except parts of Northeast India, Western Himalayan region and west south peninsular India. **The highest maximum temperature of 48.2°C was reported at SRIGANGANAGAR (RAJASTHAN).**
- ❖ **Day/Maximum Temperature Departures (as on 27-05-2026):** Yesterday, **markedly above normal (> 5.1°C)** at few places over Himachal Pradesh and East Madhya Pradesh; at isolated places over East Uttar Pradesh, West Uttar Pradesh, Haryana-Chandigarh-Delhi, Jammu-Kashmir Ladakh-Gilgit-Baltistan-Muzaffarabad, West Rajasthan, East Rajasthan, West Madhya Pradesh and Coastal Andhra Pradesh & Yanam. **appreciably above normal (3.1°C to 5.0°C)** at most places over Punjab; at few places over Arunachal Pradesh; at isolated places over Assam & Meghalaya, Gangetic West Bengal, Jharkhand, Bihar, Konkan & Goa, Vidarbha and Tamil Nadu, Puducherry & Karaikal. **above normal (1.6°C to 3.0°C)** at many places over Chhattisgarh; at few places over Nagaland, Manipur, Mizoram & Tripura, Uttarakhand, Gujarat Region, Saurashtra & Kutch and Lakshadweep; at isolated places over Odisha and Madhya Maharashtra. **near normal (-1.5°C to 1.5°C)** at many places over Andaman & Nicobar Islands and Kerala & Mahe; at most places over Coastal Karnataka; at few places over Sub Himalayan West Bengal & Sikkim, Marathwada and Telangana; at isolated places over Rayalaseema and North Interior Karnataka.

- ❖ **Night Temperatures/Minimum temperatures (as on 28-05-2026)** were **appreciably above normal (3.1°C to 5.0°C)** over East Rajasthan, Jammu-Kashmir-Ladakh, West Madhya Pradesh. **above normal (1.6°C to 3.0°C)** Kerala & Mahe, Tamil Nadu, Puducherry & Karaikal, Madhya Pradesh, East Rajasthan, Uttar Pradesh, Punjab, Himachal Pradesh, Uttarakhand, West India and below normal or near normal over rest parts of the country.

Weather Systems, Forecast and Warnings (Annexure II & III):

- ❖ An **upper air cyclonic circulation** lies over northwest Uttar Pradesh & neighbourhood in lower tropospheric levels.
- ❖ An **upper air cyclonic circulation** over lies north Jharkhand & neighbourhood in lower tropospheric levels
- ❖ A **trough** runs from northwest Uttar Pradesh to north Coastal Andhra Pradesh in lower tropospheric levels.
- ❖ A **trough** in westerlies with its axis in middle tropospheric levels runs roughly along Long. 90°E to the north of Lat. 21°N.
- ❖ An **upper air cyclonic circulation** over central Assam & neighbourhood in lower tropospheric levels
- ❖ An **upper air cyclonic circulation** over Southeast Arabian Sea & neighbourhood in middle tropospheric levels
- ❖ An **upper air cyclonic circulation** over Eastcentral & Southeast Bay of Bengal in lower and middle tropospheric levels.

Under the influence of above systems, the following weather is likely:

Northeast India:

- ❖ **Scattered to Fairly widespread** light to moderate rainfall with **thunderstorm, lightning & gusty winds (speed reaching 40-50 kmph)** likely over Nagaland, Manipur, Mizoram & Tripura on 28th May.
- ❖ **Isolated heavy rainfall** likely over Arunachal Pradesh, Assam & Meghalaya on 28th May and during 01st – 3rd June; Nagaland, Manipur, Mizoram & Tripura on 28th May and during 31st May- 3rd June.

South Peninsular India:

- ❖ **Isolated to scattered** light to moderate rainfall with **thunderstorm, lightning & gusty winds (speed reaching 40-50 kmph)** likely over Interior Karnataka 28th- 30th, Tamil Nadu, Puducherry & Karaikal, Kerala & Mahe, Lakshadweep and Telangana during 28th May-1st June; Coastal Andhra Pradesh & Yanam during 31st May-1st June; Rayalaseema during 30th -31st May.
- ❖ **Thundersquall (wind speed reaching 50-60 kmph gusting to 70 kmph)** likely over North Interior Karnataka on 28th & 29th May; Rayalaseema, Coastal Andhra Pradesh & Yanam during 28th -30th May.
- ❖ **Isolated heavy rainfall** likely over Tamil Nadu, Puducherry & Karaikal during 28th -31st May; Kerala & Mahe during 28th -29th May and during 1st -3rd June; Lakshadweep during 1st-3rd June; South Interior Karnataka on 28th May.

East India:

- ❖ **Fairly widespread to widespread** light to moderate rainfall with **thunderstorm, lightning & gusty winds (speed reaching 40-50 kmph)** likely over Andaman & Nicobar Islands during 28th May-03rd June; Sub-Himalayan West Bengal & Sikkim on 28th & 29th May
- ❖ **Isolated to scattered** light to moderate rainfall with **thunderstorm, lightning & gusty winds (speed reaching 40-50 kmph)** likely over Gangetic West Bengal on 30th May; Jharkhand, Odisha during 28th – 31st June; Bihar on 31st May & 01st June;
- ❖ **Thundersquall (wind speed reaching 60-70 kmph gusting to 80 kmph)** likely over Gangetic West Bengal on 28th; Bihar on 29th May.
- ❖ **Thundersquall (wind speed reaching 50-60 kmph gusting to 70 kmph)** likely over Gangetic West Bengal on 29th May; Jharkhand during 28th-31st May; Bihar on 28th & 30th May.
- ❖ **Isolated heavy rainfall likely over Andaman & Nicobar Islands during 29th-31st May; Gangetic West Bengal on 28th; Bihar on 29th; Odisha during 28th -31st May.**
- ❖ **Isolated Hailstorm activity** likely over Bihar on 29th May.

Northwest India:

- ❖ **Scattered to fairly widespread** light to moderate rainfall with **thunderstorm, lightning & gusty winds (speed reaching 40-50 kmph)** likely over Jammu-Kashmir on 30th May; Himachal Pradesh on 28th & 29th May; Uttarakhand during 28th – 30th May.
- ❖ **Scattered to fairly widespread** light to moderate rainfall with **thunderstorm, lightning & gusty winds (speed reaching 40-50 kmph)** likely over East Uttar Pradesh on 31st May; West Rajasthan during 31st May- 02nd June; East Rajasthan during 31st May – 03rd June.

- ❖ **Thundersquall (wind speed reaching 80-90 kmph gusting to 100 kmph) likely** over West Uttar Pradesh on 29th May
- ❖ **Thundersquall (wind speed reaching 70-80 kmph gusting to 90 kmph) likely** over Punjab, Haryana Chandigarh & Delhi on 28th & 29th; West Uttar Pradesh on 28th; East Uttar Pradesh on 29th May.
- ❖ **Thundersquall (wind speed reaching 60-70 kmph gusting to 80 kmph) likely** East Uttar Pradesh on 28th; West Rajasthan on 29th; East Rajasthan on 29th & 30th May.
- ❖ **Thundersquall (wind speed reaching 50-60 kmph gusting to 70 kmph) likely** over Jammu-Kashmir on 28th & 29th; Punjab, Haryana Chandigarh & Delhi, Uttar Pradesh on 30th; Rajasthan on 28th May.
- ❖ **Isolated heavy rainfall** likely over Uttarakhand, West Uttar Pradesh on 29th; Punjab, Haryana, Chandigarh on 29th & 30th May.
- ❖ **Isolated Hailstorm activity** likely over Himachal Pradesh, Uttarakhand, Punjab, Haryana Chandigarh & Delhi, West Uttar Pradesh on 28th & 29th May and East Uttar Pradesh, Rajasthan on 29th May.
- ❖ **Duststorm** very likely at isolated places over Uttar Pradesh and Rajasthan on 28th & 29th May.

Central India:

- ❖ **Isolated** light to moderate rainfall with **thunderstorm, lightning & gusty winds (speed reaching 40-50 kmph)** likely over West Madhya Pradesh 28th May – 01st June; East Madhya Pradesh, Vidarbha 28th May, – 1st June; during Chhattisgarh 01st June;
- ❖ **Thundersquall (wind speed reaching 50-60 kmph gusting to 70 kmph) likely** over West Madhya Pradesh during 29th – 31st May; East Madhya Pradesh on 29th & 30th; Chhattisgarh during 28th – 31st May.
- ❖ **Isolated heavy rainfall** likely over West Madhya Pradesh on 31st May.
- ❖ **Isolated Hailstorm activity** likely over Madhya Pradesh on 29th & 30th May; Chhattisgarh on 28th May.

West India:

- ❖ **Isolated** light to moderate rainfall with **thunderstorm, lightning & gusty winds (speed reaching 40-50 kmph)** likely over Konkan & Goa during 31st May – 03rd June; Madhya Maharashtra; Marathawada on 28th and during 31st May – 03rd June; Coastal areas of Gujarat state during 29th – 03rd June.
- ❖ **Isolated heavy rainfall** likely over Gujarat Region during 31st May – 2nd June.

Forecast of maximum/day temperatures:

- ❖ **Gradual fall** in maximum temperatures **by 6-8°C** likely over Northwest India **during 28th - 30th May and gradual rise by 4-6°C during 31st May-03rd June.**
- ❖ No significant change in maximum temperatures likely over Central India till 28th May and gradual fall by 3-5°C during 29th May-03rd June
- ❖ **Gradual fall** in maximum temperatures **by 2-3°C** likely over East India till 31st May and gradual rise by 2-3°C during 01st- 3rd June.
- ❖ No significant change in maximum temperatures likely over Madhya Maharashtra State till 29th May and gradual fall by 2-3°C during 30th May-03rd June.
- ❖ No significant change in maximum temperatures likely over south peninsular India till 28th May and gradual fall by 3-5°C during 29th May-03rd June.
- ❖ No significant change in maximum temperatures likely over the rest parts of country till 03rd June 2026.

Heat Wave, Hot & Humid weather and Warm Night conditions warning:

- ❖ **Heat wave conditions** very likely in isolated pockets over Chhattisgarh, Haryana Chandigarh & Delhi, Punjab, West Madhya Pradesh and West Uttar Pradesh on 28th May; West Rajasthan on 30th May; East Madhya Pradesh and Vidarbha on 29th May; Coastal Andhra Pradesh & Yanam during 28th -29th May; Telangana during 29th -30th May ;with **severe heat wave conditions** also likely in isolated pockets over West Rajasthan during 28th -29th May; East Madhya Pradesh, East Rajasthan and Vidarbha on 28th May.
- ❖ **Hot and humid** weather conditions likely to prevail over Odisha during 28th-31st May; Gujarat Region and Konkan & Goa on 28th May; Rayalaseema and Tamil Nadu, Puducherry & Karaikal during 28th -29th May; Coastal Andhra Pradesh & Yanam during 30th May-1st June.
- ❖ **Warm Night conditions** very likely to prevail in isolated pockets over Vidarbha on 28th May.

Fisherman Warning:

Fishermen are advised not to venture into the following areas:

- ❖ **Bay of Bengal:** Over Gulf of Mannar, along and off Tamil Nadu & Sri Lanka Coasts, over many parts of south & adjoining central Bay of Bengal during 28th May to 02nd June, 2026. Along and off west Bengal adjoining north Odisha coasts during 28th to 30th May, over many parts of Andaman Sea during 28th May to 02nd June 2026.

- ❖ **Arabian Sea:** Over central parts of south Arabian Sea on 28th May, 2026; Over Comorin areas during 28th May to 02nd June, 2026, along & off north Gujarat coast and adjoining northeast Arabian Sea during 29th May to 31st May, 2026. Along and off Somalia coast, adjoining some parts of southwest Arabian Sea during on 28th May to 02nd June, 2026.

Weather conditions and forecast over Delhi/NCR during 28th -31st May, 2026 (Annexure IV)

For more details, kindly refer National Weather Bulletin:

https://mausam.imd.gov.in/responsive/all_india_forcast_bulletin.php

For District wise warnings refer: <https://mausam.imd.gov.in/responsive/districtWiseWarningGIS.php>

For Fishermen warning refer <https://rsmcnewdelhi.imd.gov.in/fishermenwarning.php>

Significant rainfall recorded (in cm) (from 0830 hours IST of yesterday to 0830 hours IST of today):

- ❖ **Kerala & Mahe:** Mattanchery 10, Vaikom 9, Cherthala 8, Venkuringi 8, Mancompu 7, Vaikom 7, Palluruthy 7
- ❖ **Assam & Meghalaya:** Jorhat (10)
- ❖ **Odisha:** Atamalik(8)

Gusty winds (in >= 40 kmph) (from 0830 hours IST of yesterday to 0830 hours IST of today):

- ❖ **Nagaland, Manipur, Mizoram & Tripura:** Lawngtlai 91, Manpathar 52, Gokulpur 48, Maharani43, Agartala 40
- ❖ **Odisha:** Rourkela 76, Bhubaneswar 72, Janhukuda 70, Benakuda 68, Keonjhar 67, Udayagiri 61, Sonapur 61, Bhawanipatna 59, University 54, Cuttack 52, Mayurbhanj 52, Ranital 48, Chipilima 41
- ❖ **Jharkhand:** Simdega76, Darisai56, Baharagora 41, Saraikela 41
- ❖ **Chhattisgarh:** Mana 68
- ❖ **Gangetic West Bengal:** Hooghly 65, Alipore 60, Nimpith 59, Uluberia57, Jhargram 56, Purulia 56, Burdwan 56, Kalyani 48, Kharagpur 48, Kalna 44, Bijpur 44, Dumdum 44, Nandakumar 43
- ❖ **Telangana:** Ramgiri_Khilla 59, Rars_Polasa_Jagtiyal 50, Prakasam_Jammikunta 50, Palem 41, Mamnoor 41, Kaveri_Siddipet 41
- ❖ **Coastal Andhra Pradesh & Yanam:** Lam Guntur 50, Maruteru 48, Peddapuram 41
- ❖ **West Madhya Pradesh:** Ashoknagar 50
- ❖ **Punjab:** Mohali 48, Chandigarh 43
- ❖ **East Madhya Pradesh:** Jabalpur 46
- ❖ **Madhya Maharashtra:** Shahada Nandurbar 44, Kalwan 41
- ❖ **Jammu-Kashmir-Ladakh-Gilgit-Baltistan-Muzaffarabad:** Jmu43,
- ❖ **Uttarakhand:** Pantnagar 43, Ranichauri41
- ❖ **Haryana:** Panchkula 43 Karnal 43
- ❖ **Tamil Nadu, Puducherry & Karaikal:** Sethu_Bhaskar_Agri_College_Kar 41, Thiruchendur 41
- ❖ **Andaman & Nicobar Islands:** Shri Viajyapuram40

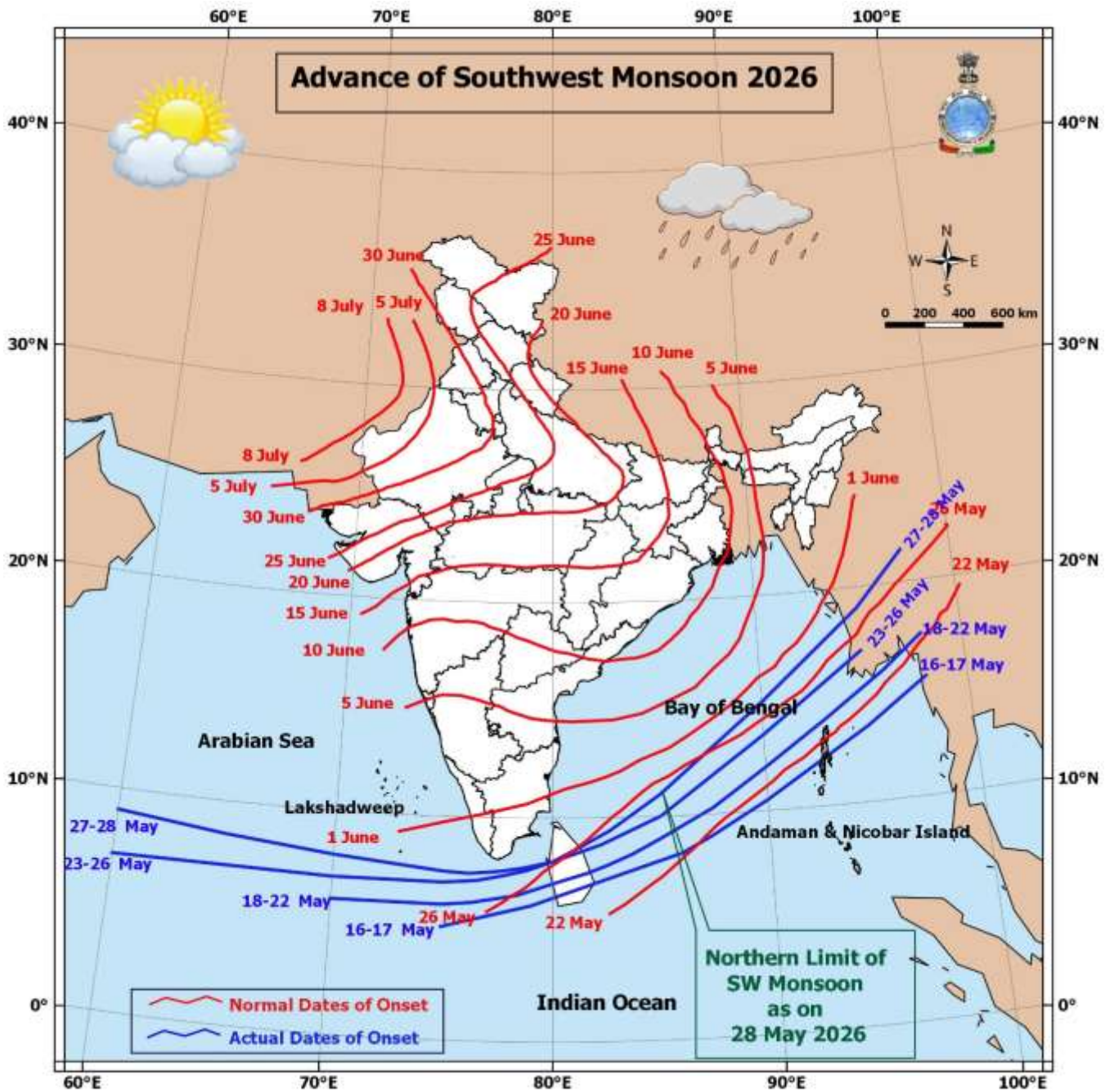
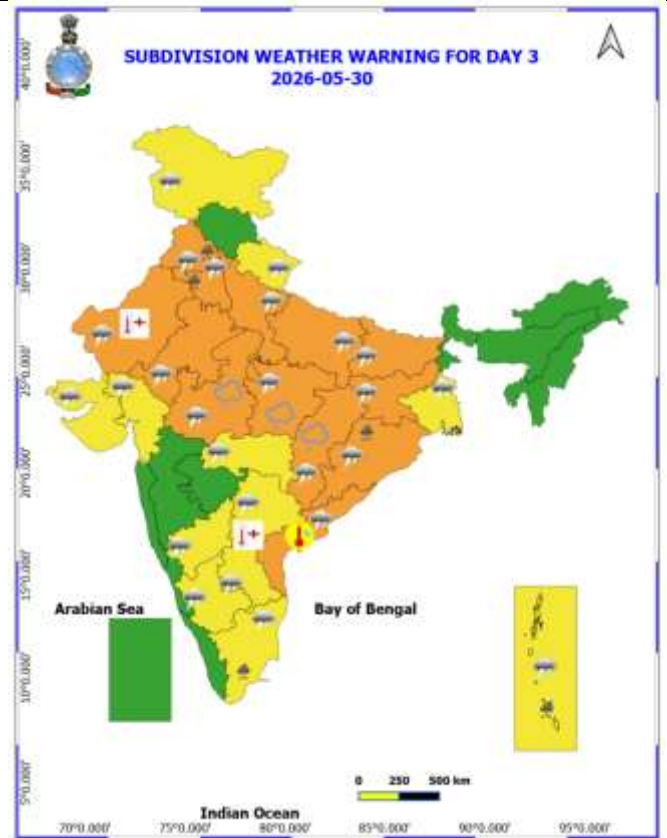
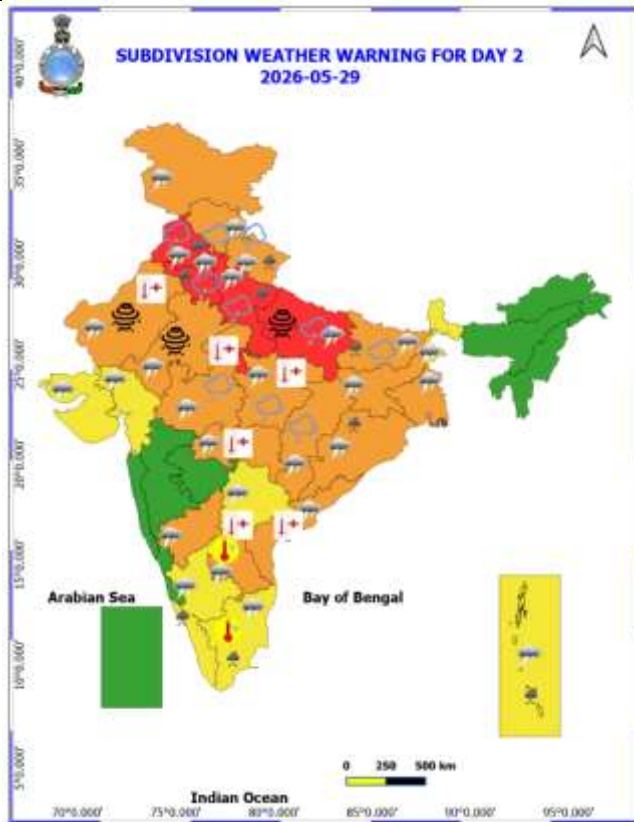
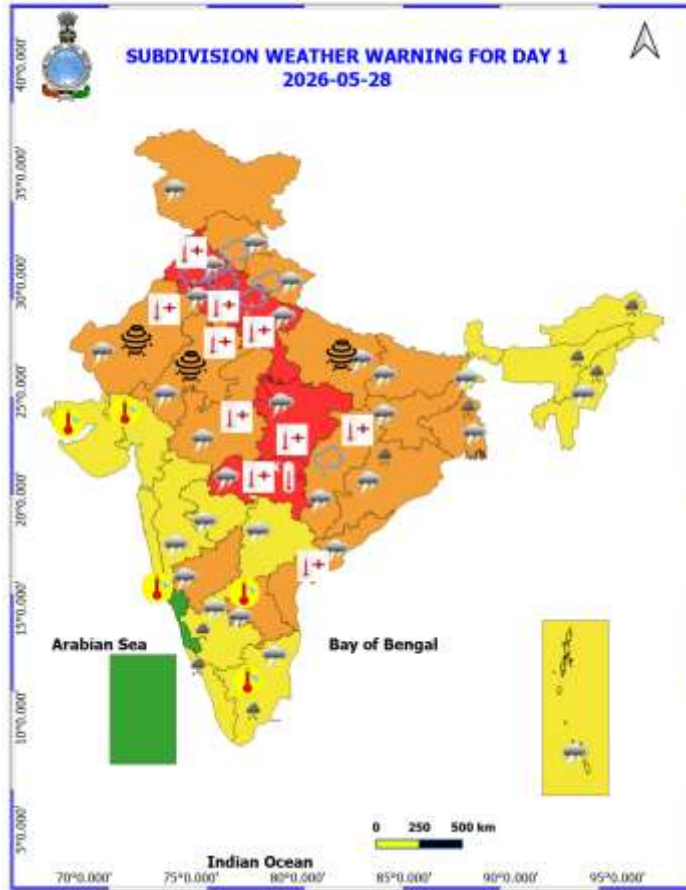
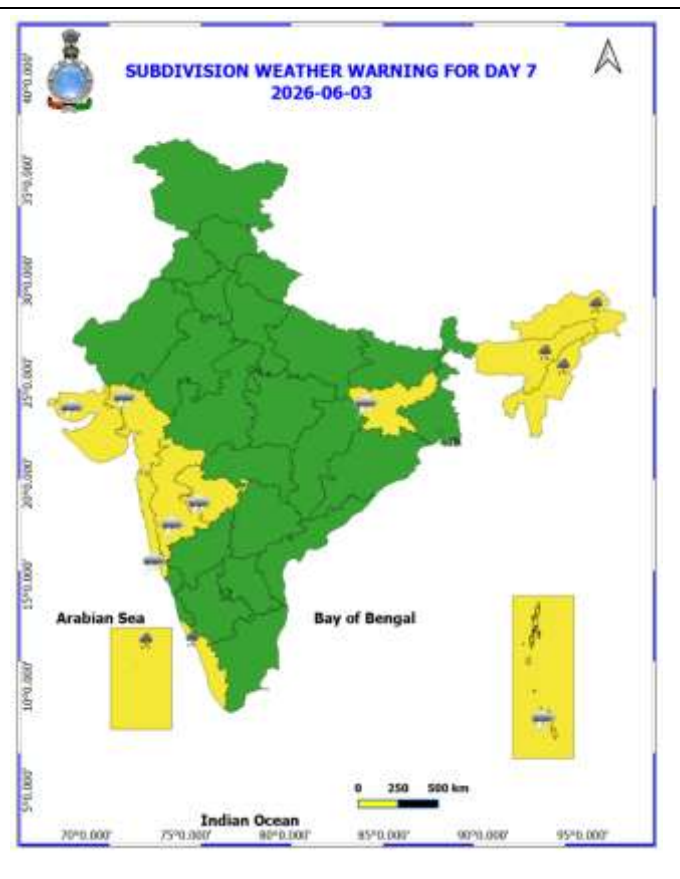
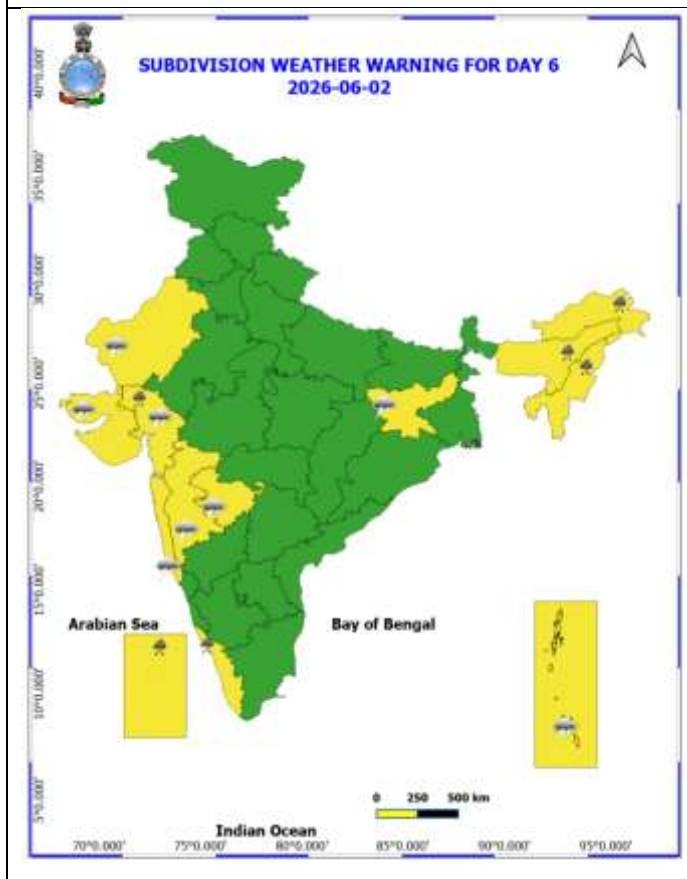
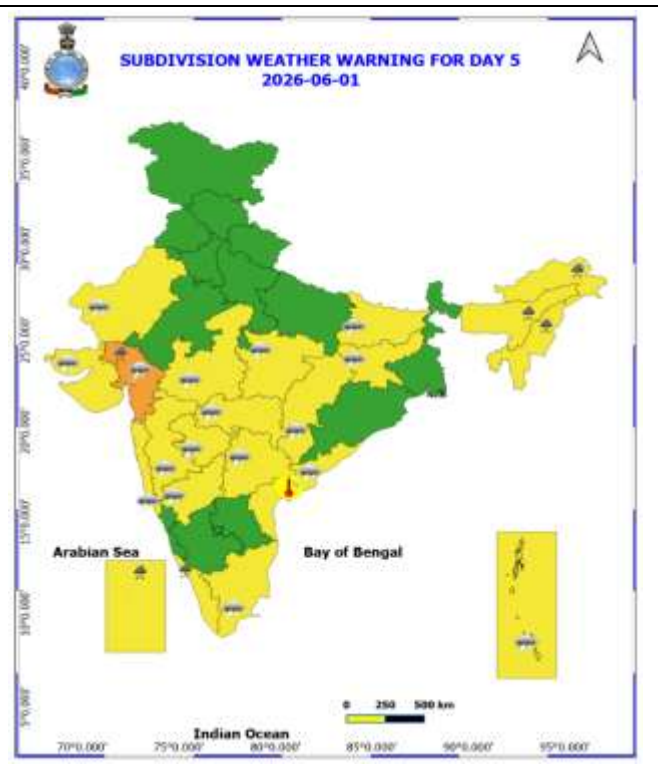
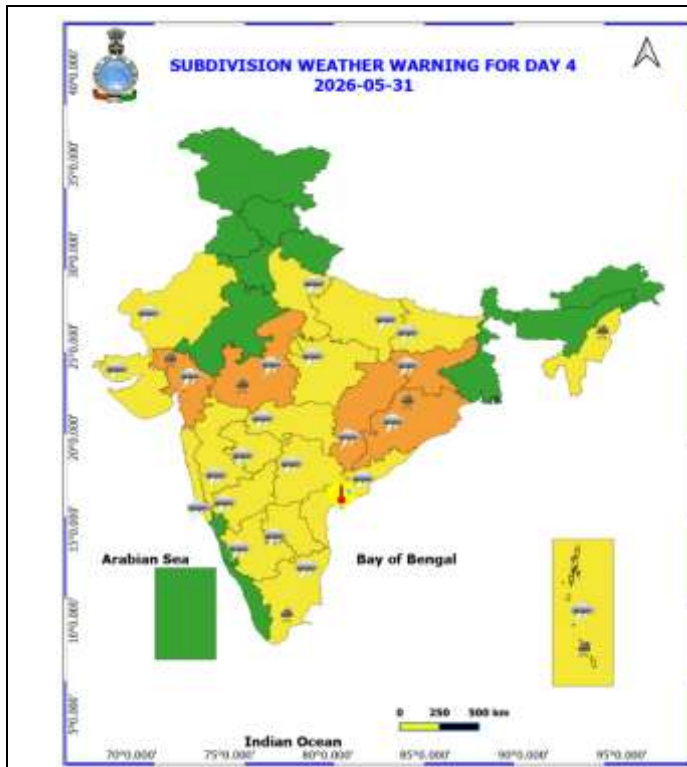


Table-1								
7 Days Rainfall Forecast								
S.No.	Subdivision	28- May	29- May	30- May	31- May	1- Jun	2- Jun	3- Jun
		Day 1	Day 2	Day 3	Day 4	Day 5	Day 6	Day 7
1	ANDAMAN & NICOBAR ISLANDS	WS	WS	WS	WS	WS	WS	WS
2	ARUNACHAL PRADESH	SCT	SCT	SCT	SCT	FWS	FWS	FWS
3	ASSAM & MEHGHALAYA	FWS	SCT	SCT	FWS	FWS	FWS	WS
4	NAGALAND, MANIPUR, MIZORAM AND TRIPURA	FWS	FWS	FWS	FWS	FWS	FWS	FWS
5	SUB HIMALAYAN WEST BENGAL & SIKKIM	SCT	ISOL	ISOL	ISOL	ISOL	SCT	SCT
6	GANGETIC WEST BENGAL	WS	FWS	SCT	ISOL	ISOL	ISOL	ISOL
7	ODISHA	SCT	SCT	SCT	SCT	ISOL	ISOL	ISOL
8	JHARKHAND	SCT	SCT	SCT	SCT	ISOL	ISOL	ISOL
9	BIHAR	SCT	FWS	SCT	ISOL	ISOL	DRY	DRY
10	EAST UTTAR PRADESH	SCT	FWS	FWS	SCT	ISOL	DRY	DRY
11	WEST UTTAR PRADESH	SCT	FWS	FWS	SCT	ISOL	DRY	DRY
12	UTTARAKHAND	FWS	WS	FWS	SCT	SCT	ISOL	ISOL
13	HARYANA, CHANDIGARH & DELHI	SCT	FWS	FWS	ISOL	DRY	DRY	DRY
14	PUNJAB	SCT	FWS	FWS	ISOL	DRY	DRY	DRY
15	HIMACHAL PRADESH	SCT	FWS	SCT	ISOL	ISOL	ISOL	ISOL
16	JAMMU AND KASHMIR AND LADAKH	FWS	SCT	ISOL	DRY	DRY	DRY	DRY
17	WEST RAJASTHAN	ISOL	ISOL	ISOL	ISOL	ISOL	ISOL	ISOL
18	EAST RAJASTHAN	ISOL	ISOL	SCT	SCT	ISOL	ISOL	ISOL
19	WEST MADHYA PRADESH	ISOL	SCT	SCT	FWS	SCT	ISOL	ISOL
20	EAST MADHYA PRADESH	ISOL	SCT	SCT	SCT	ISOL	ISOL	ISOL
21	GUJRAT REGION	DRY	DRY	ISOL	SCT	SCT	SCT	SCT
22	SAURASHTRA & KUTCH	DRY	DRY	ISOL	ISOL	ISOL	ISOL	ISOL
23	KONKAN & GOA	ISOL	ISOL	ISOL	ISOL	ISOL	ISOL	ISOL
24	MADHYA MAHARASHTRA	ISOL	ISOL	ISOL	ISOL	ISOL	ISOL	ISOL
25	MARATHWADA	ISOL	ISOL	ISOL	ISOL	ISOL	ISOL	ISOL
26	VIDARBHA	ISOL	ISOL	ISOL	ISOL	ISOL	ISOL	ISOL
27	CHHATTISGARH	ISOL	ISOL	ISOL	ISOL	ISOL	ISOL	ISOL
28	COASTAL ANDHRA PRADESH	ISOL	ISOL	ISOL	ISOL	ISOL	ISOL	ISOL
29	TELANGANA	ISOL	ISOL	ISOL	ISOL	ISOL	ISOL	ISOL
30	RAYALASEEMA	ISOL	ISOL	ISOL	ISOL	ISOL	ISOL	ISOL
31	TAMILNADU & PUDUCHERRY	ISOL	ISOL	SCT	SCT	SCT	SCT	ISOL
32	COSTAL KARNATAKA	FWS	ISOL	ISOL	ISOL	ISOL	SCT	SCT
33	NORTH INTERIOR KARNATAKA	ISOL	ISOL	ISOL	ISOL	ISOL	ISOL	ISOL
34	SOUTH INTERIOR KARNATAKA	SCT	ISOL	SCT	ISOL	ISOL	ISOL	ISOL
35	KERALA AND MAHE	WS	FWS	FWS	WS	WS	WS	WS
36	LAKSHADWEEP	WS	WS	WS	WS	WS	WS	WS

- As the lead period increases forecast accuracy decrease.





- Action may be taken based on ORANGE AND REDCOLOUR warnings.
- Vulnerable regions likely urban and hilly areas action may be initiated for heavy rainfall warning.
- As the lead period increases forecast accuracy decreases.

Detailed district-wise Multi-Hazard weather warning for next five days available at <https://mausam.imd.gov.in/responsive/districtWiseWarningGIS.php>

Weather forecast over Delhi/NCR during 28th May to 31st May 2026

Past Weather:

There has been slight rise in maximum temperatures up to 1°C and rise in minimum temperatures up to 1-2°C during past 24 hours over Delhi. The maximum temperatures were in the range of 44-46°C and the minimum temperatures are in the range of 27-28°C respectively during past 24 hours over Delhi. The minimum temperatures are above normal (1.6°C to 3.0°C) at isolated places and normal (-1.5°C to 1.5°C) over remaining parts of Delhi. The maximum temperatures were appreciably above normal (3.1°C to 5.0°C) at most places of Delhi. Mainly clear sky with surface wind speeds up to 20 kmph gusting to 45 kmph from west direction over Delhi during past 24 hours. Mainly clear sky with surface wind speeds up to 20 kmph likely to prevailed from east direction over the region in the forenoon today.

Weather Forecast:

28.05.2026: Partly cloudy sky becoming generally cloudy sky towards evening/night. Sustained strong surface winds speed reaching 20-30 kmph occasionally gusting to 40 kmph during the day. A spell of very light to light rain accompanied with thunderstorm/lightning/ dust storm and strong winds speed reaching 50-60 kmph gusting to 70 kmph during evening to night. The maximum temperatures over Delhi are likely to be in the range of 40°C to 42°C. The predominant surface wind is likely to be from the southeast direction with surface wind speed reaching up to 25 kmph during the afternoon hours. The wind speed will decrease becoming up to 20 kmph from the southeast direction during evening and night.

29.05.2026: Generally cloudy sky. A spell of very light to light rain accompanied with thunderstorm/lightning/Dust storm and strong winds speed reaching 60-70 kmph gusting to 80 kmph towards morning to forenoon. Another spell of very light to light rain accompanied with thunderstorm/lightning and strong winds speed reaching 40-50 kmph gusting to 60 kmph towards afternoon to evening. The maximum and minimum temperatures over Delhi are likely to be in the range of 35°C to 37°C and 23°C to 25°C respectively. The minimum temperature will be below normal (-1.6°C to -3.0°C) at most places, and maximum temperatures will be appreciably below normal (-3.1°C to -5.0°C) at most places over Delhi. The predominant surface wind is likely to be from southeast direction with surface wind speed reaching up to 20 kmph during the morning hours. The wind speed will increase becoming up to 22 kmph from the south direction during afternoon hours. The wind speed will increase becoming up to 25 kmph from the northeast direction during evening and night.

30.05.2026: Generally cloudy sky. A spell of very light to light rain accompanied with thunderstorm/lightning and strong winds speed reaching 40-50 kmph gusting to 60 kmph towards afternoon to evening. The maximum and minimum temperatures over Delhi are likely to be in the range of 34°C to 36°C and 22°C to 24°C respectively. The minimum temperature will be appreciably below normal (-3.1°C to -5.0°C) at most places, and the maximum temperature will be appreciably below normal (-3.1°C to -5.0°C) over Delhi. The predominant surface wind is likely to be from east direction with surface wind speed reaching up to 22 kmph during the morning hours. The wind speed will increase becoming up to 25 kmph from the southeast direction during afternoon hours. The wind speed will decrease becoming up to 20 kmph from the northeast direction during evening and night.

31.05.2026: Generally cloudy sky. A spell of very light to light rain accompanied with thunderstorm/ lightning and gusty wind speed 40-50 kmph towards morning/forenoon. The maximum and minimum temperatures over Delhi are likely to be in the range of 35°C to 37°C and 22°C to 24°C respectively. The minimum temperature will be appreciably below normal (-3.1°C to -5.0°C) at most places, and the maximum temperature will be appreciably below normal (-3.1°C to -5.0°C) over Delhi. The predominant surface wind is likely to be from the southeast direction with wind reaching up to 20 kmph from the morning hours. The wind speed will decrease becoming up to 15 kmph from the southeast direction during afternoon hours. The wind speed will increase becoming up to 20 kmph from the northeast direction during evening and night.

Impact expected and Action Suggested due to thunderstorm with lightning/gusty winds:

Thunderstorms accompanied with lightning and gusty winds (60–70 kmph reaching up to 80 kmph) with dust-raising surface winds are likely to occur.

- **Expected Impacts:** Breaking of tree branches and uprooting of large trees, falling of dead tree limbs, Damage to standing crops, Minor to major damage to power and communication lines due to falling

branches, Partial damage to vulnerable structures due to strong winds, Loose objects may get blown away

- **Advisory for Public Safety:** Keep a close watch on weather updates and worsening conditions, stay indoors and avoid unnecessary travel, Close windows and doors securely, take shelter in safe places and avoid open areas, do not take shelter under trees, do not lie on concrete floors or lean against concrete walls during lightning activity, unplug electrical and electronic appliances, immediately move out of water bodies, stay away from objects that conduct electricity

Citizens are advised to remain alert and follow safety precautions to avoid any loss of life or property.

Impact expected and action suggested due to isolated thunderstorm with lightning, gusty/squally winds & hailstorm over

- ❖ Moderate to Severe Thunderstorm activity with squally wind speed likely over Northwest India, Central India and East India during 28th – 31st May.
- ❖ **Isolated Hailstorm activity** likely over Himachal Pradesh, Uttarakhand, Punjab, Haryana Chandigarh & Delhi, West Uttar Pradesh on 28th & 29th May and East Uttar Pradesh, Rajasthan Bihar on 29th; Madhya Pradesh on 29th & 30th May; Chhattisgarh on 28th May.

Impact expected:

- Breaking of tree branches, uprooting of large avenue trees. Large dead limbs blown from trees. Damage to Standing crops.
- Minor to Major damage to banana and papaya trees.
- Minor to major damage to power and communication lines due to breaking of branches.
- Strong wind/hail may damage plantation, horticulture and standing crops.
- Partial damage to vulnerable structures due to strong winds.
- Minor damage to kutcha houses/walls and huts.
- Loose objects may fly.

Action suggested:

- People are advised to keep a watch on the weather for worsening conditions and be ready to move to safer places accordingly.
- Stay indoors, close windows & doors and avoid travel if possible.
- Take safe shelters; do not take shelter under trees.
- Do not lie on concrete floors and do not lean against concrete walls.
- Unplug electrical/ electronic appliances.
- Immediately get out of water bodies.
- Keep away from all the objects that conduct electricity.

Impact Expected & Action Suggested due to heavy/very heavy rainfall over

- ❖ **Isolated heavy rainfall** likely over Arunachal Pradesh, Assam & Meghalaya on 28th May and during 01st – 3rd June; Nagaland, Manipur, Mizoram & Tripura on 28th May and during 31st May- 3rd June; Tamil Nadu, Puducherry & Karaikal during 28th -31st May; Kerala & Mahe during 28th -29th May and during 1st -3rd June; Lakshadweep during 1st-3rd June; South Interior Karnataka on 28th May; Andaman & Nicobar Islands during 29th-31st May; Gangetic West Bengal on 28th; Bihar on 29th; Odisha during 28th -30th May; Uttarakhand, West Uttar Pradesh on 29th; Punjab, Haryana, Chandigarh on 29th & 30th May; West Madhya Pradesh on 31st May; Gujarat Region during 31st May – 2nd June
- ❖ **Impact Expected**
 - Localized Flooding of roads, water logging in low lying areas and closure of underpasses mainly in urban areas.
 - Occasional reduction in visibility due to heavy rainfall.
 - Disruption of traffic in major cities due to water logging in roads leading to increased travel time.
 - Minor damage to kutcha roads.
 - Possibilities of damage to vulnerable structure.
 - Localized Landslides/Mudslides/landslips/mudslips/landsinks/mudsinks.
 - Damage to horticulture and standing crops in some areas due to inundation.

- It may lead to riverine flooding in some river catchments (for riverine flooding please visit Web page of CWC)

Action Suggested

- Check for traffic congestion on your route before leaving for your destination.
- Follow any traffic advisories that are issued in this regard.
- Avoid going to areas that face the water logging problems often.
- Avoid staying in vulnerable structure.

Impact expected and action suggested due to Heat wave/ severe heat wave conditions:

- ❖ Heat wave to severe heat wave conditions likely to continue over parts of Central India during next 48 hours & over Northwest India during next 24 hours and abate thereafter.

Red alert Areas

- Very high likelihood of developing heat illness and heat stroke in all ages.
- Extreme care needed for vulnerable people.

Orange alert Areas

- High temperature & increased likelihood of heat illness symptoms in people who are either exposed to sun for a prolonged period or doing heavy work.
- High health concern for vulnerable people e.g. infants, elderly, people with chronic diseases.
- Avoid heat exposure– keep cool. Avoid dehydration.
- Drink sufficient water- even if not thirsty.
- Use ORS, homemade drinks like lassi, torani (rice water), lemon water, buttermilk, etc. to keep yourself hydrated.

Yellow alert Areas

- Moderate temperature & heat is tolerable for general public but moderate health concern likely for vulnerable people e.g. infants, elderly, people with chronic diseases.
- Avoid heat exposure.
- Wear lightweight, light colour, loose, cotton clothes.
- Cover your head, use a cloth, hat or umbrella.

Agromet advisories for likely impact of Hailstorms

- In **Himachal Pradesh, Uttarakhand, Punjab, Haryana, West Uttar Pradesh, Madhya Pradesh, Bihar and Chhattisgarh** use hail nets or hail caps in fruit orchards and vegetable plants to protect them from mechanical damage.
- Ensure effective field drainage to prevent waterlogging. Undertake picking of matured fruits at the earliest. Keep the harvested produce in safe places.

Agromet advisories for likely impact of Heavy Rainfall

- In **Andaman & Nicobar**, postpone irrigation, intercultural operations and application of plant protection measures & fertilizers to the standing crops. Provide adequate drainage in standing-crop fields to prevent waterlogging.
- In **Arunachal Pradesh**, ensure proper drainage in the fields of rice, maize, other standing crops, vegetables, and orchards. Keep the harvested cabbage, pea, mustard, late-maturing paddy & potatoes produce to safe places.
- In **Assam**, undertake harvesting of *Boro* rice after current spells of heavy rain and store the already harvested produce in a safe place. Cover the rice nursery beds with thin polythene sheet. Ensure proper drainage arrangements for quick removal of excess water from rice nurseries, vegetables, banana, citrus and papaya fields.
- **Meghalaya**, harvest the mature banana fruits immediately during clear weather. Make necessary arrangements to remove excess rainwater from the maize, ginger, vegetable, banana and other orchard fields crop fields.
- In **Nagaland**, delay transplanting of brinjal in main field. For already transplanted seedlings, maintain proper drainage in and around the fields of maize, vegetables and orchard.

- **In Manipur**, ensure that ridges and bunds around rice fields are well constructed to maintain the required water level; provide adequate drainage to remove excess rain water from chilli, ginger, turmeric, banana and other crops.
- **In Mizoram**, create drainage channels surrounding the rice fields and utilize grass mulch to cover the seeds. Provide support to fruit-bearing or partially lodge plants/trees. Propping should be done to prevent maize plants from lodging.
- **Tripura** – undertake harvesting of mature Boro rice immediately and shift the harvested produce to a safe and dry place for storage.
- **Bihar**, withhold irrigation in standing crops. Prepare paddy nursery fields with proper drainage arrangements.
- In **Tamil Nadu**, maintain proper drainage to prevent water stagnation in cotton, rice nurseries, recently sown cumbu and vegetables,
- In **Keralam**, provide adequate drainage for banana, coconut, and other vegetables. Provide support to banana plants.
- In **South Interior Karnataka**, undertake harvesting of matured rice after current spells of rain, ensure proper drainage in paddy fields, arecanut and mango orchards. Provide staking to tomato plants.
- In the regions expecting heavy rainfall, including **Uttarkhand, Haryana, West Uttar Pradesh, Gangetic West Bengal, Odisha and Punjab**, withhold irrigation in standing crops, make necessary arrangements to remove excess rainwater from the crop fields.

Agromet advisories for likely impact of High temperatures/ Heat Waves

- In **Punjab**, apply light and frequent irrigation to vegetable, moong fruit plants orchards and onion nurseries.
- In **Haryana**, maintain adequate irrigation in standing sugarcane, cotton and summer fodder crops. Complete paddy nursery preparation with assured irrigation facilities and adopt mulching/moisture conservation practices to reduce water stress in newly sown crops
- In **West Uttar Pradesh**, provide frequent irrigation and mulching for standing crops such as maize, green gram, black gram, sugarcane, sunflower, vegetables, and fruit plants such as mango, banana, and papaya.
- In **Rajasthan**, apply need-based irrigation to green gram and summer cucurbit crops such as bottle gourd, pumpkin, ridge gourd, cucumber, bitter melon, and summer ladyfinger, as well as to young fruit plants such as mango, amla, pomegranate, wood apple, and plum. Undertake soil mulching/mulching with straw/polythene to reduce water loss by evaporation.
- In **Madhya Pradesh**, apply light irrigation to maize, *moong*, *urd*, groundnut, and vegetable crops as required.
- In **Chhattisgarh** - Apply light irrigation after weeding and hoeing in *rabi* maize, banana, and papaya plantations. Complete harvesting of wheat and chickpea, and ensure safe storage.
- **Maharashtra** - In **Konkan**, irrigate green gram, vegetables, and newly planted arecanut and coconut. Use straw mulch in vegetable and orchard crops to reduce evaporation, and install shade nets for newly planted crops.
- In **Telangana**, provide irrigation to mango orchards and vegetable crops, as required.
- In **Coastal Andhra Pradesh**, apply light irrigation to summer crops and vegetables to maintain soil moisture. Apply mulching to conserve soil moisture in the standing crops.

Agromet advisories for likely impact of Thunderstorm / Gusty Winds

- Shift the harvested produce in safer places or cover the produce with tarpaulin sheets in the fields. Tie the harvested crops securely and cover them to minimize the risk of displacement from strong surface winds.
- Provide mechanical support to horticultural crops and staking or support to vegetables and young fruit plants / fruit-bearing plants to avoid lodging due to strong winds.

Livestock / Poultry / Fisheries

- Keep the animals inside the shed during hailstorms/ heavy rainfall and provide them with balanced feed.
- Store feed and fodder in a safe place to prevent spoilage.
- Construct an outlet with proper netting around the ponds to drain excess water, thereby preventing fish from escaping in the event of overflow.

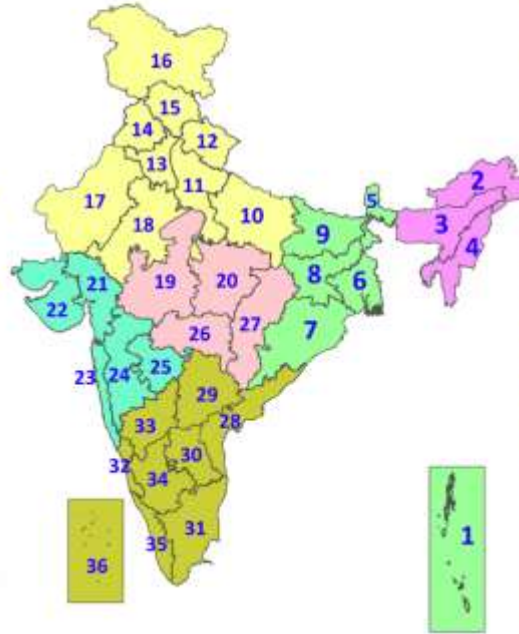
- In regions with high temperatures and heat waves, provide clean, hygienic, and ample drinking water for animals, and cover the roofs of poultry sheds with grass to reduce the adverse effects.

Legends & abbreviations:

- ❖ **Heavy Rain:**64.5115.5mm; **Very Heavy Rain:**115.6204.4mm; **Extremely Heavy Rain:** >204.4mm.
- ❖ **Obsy:** Observatory; Automatic Weather Station; **ARG:** Automatic Rain Gauge; **dist:** District; **NH:** National Highway; **KVK:** Krishi Vigyan Kendra; **DVC:** Damodar Valley Corporation; **PTO:** Part Time Office, **Aero:** Aerodrome, **IAF:** Indian Air Force.
- ❖ **Region wise classification of meteorological Sub-Divisions:**
 - **Northwest India:** Western Himalayan Region (Jammu-Kashmir-Ladakh-Gilgit-Baltistan-Muzaffarabad, Himachal Pradesh and Uttarakhand); Punjab, Haryana Chandigarh & Delhi; West Uttar Pradesh, East Uttar Pradesh, West Rajasthan and East Rajasthan.
 - **Central India:** West Madhya Pradesh, East Madhya Pradesh, Vidarbha and Chhattisgarh.
 - **East India:** Bihar, Jharkhand, Sub-Himalayan West Bengal & Sikkim; Gangetic West Bengal, Odisha and Andaman & Nicobar Islands.
 - **Northeast India:** Arunachal Pradesh, Assam & Meghalaya and Nagaland, Manipur, Mizoram & Tripura.
 - **West India:** Gujarat Region, Saurashtra & Kutch, Coastal Maharashtra (Konkan) & Goa, Madhya Maharashtra and Marathawada.
 - **South India:** Coastal Andhra Pradesh & Yanam, Telangana, Rayalaseema, Coastal Karnataka, North Interior Karnataka, South Interior Karnataka, Kerala & Mahe, Tamil Nadu, Puducherry & Karaikal and Lakshadweep.

LEGENDS

1. अंडमान और निकोबार द्वीपसमूह
2. अरुणाचल प्रदेश
3. असम और मेघालय
4. नागालैंड, मणिपुर, मिजोरम और त्रिपुरा
5. उप-हिमालयी पश्चिम बंगाल और सिक्किम
6. गंगीय पश्चिम बंगाल
7. ओडिशा
8. झारखंड
9. बिहार
10. पूर्वी उत्तर प्रदेश
11. पश्चिम उत्तर प्रदेश
12. उत्तराखंड
13. हरियाणा, चंडीगढ़ और दिल्ली
14. पंजाब
15. हिमाचल प्रदेश
16. जम्मू और कश्मीर और लद्दाख
17. पश्चिम राजस्थान
18. पूर्वी राजस्थान
19. पश्चिम मध्य प्रदेश
20. पूर्वी मध्य प्रदेश
21. गुजरात
22. सौराष्ट्र
23. कोंकण और गोवा
24. मध्य महाराष्ट्र
25. मराठवाड़ा
26. विदर्भ
27. छत्तीसगढ़
28. तटीय आंध्र प्रदेश और यनम
29. तेलंगाना
30. रायलसीमा
31. तमिलनाडु, पुडुचेरी और कराईकल
32. तटीय कर्नाटक
33. आंतरिक उत्तरी कर्नाटक
34. आंतरिक दक्षिणी कर्नाटक
35. केरल और माहे
36. लक्षद्वीप



1. Andaman & Nicobar Islands
2. Arunachal Pradesh
3. Assam & Meghalaya
4. Nagaland, Manipur, Mizoram & Tripura
5. Sub-Himalayan West Bengal & Sikkim
6. Gangetic West Bengal
7. Odisha
8. Jharkhand
9. Bihar
10. East Uttar Pradesh
11. West Uttar Pradesh
12. Uttarakhand
13. Haryana, Chandigarh & Delhi
14. Punjab
15. Himachal Pradesh
16. Jammu & Kashmir and Ladakh
17. West Rajasthan
18. East Rajasthan
19. West Madhya Pradesh
20. East Madhya Pradesh
21. Gujarat
22. Saurashtra
23. Konkan & Goa
24. Madhya Maharashtra
25. Marathwada
26. Vidarbha
27. Chhattisgarh
28. Coastal Andhra Pradesh & Yanam
29. Telangana
30. Rayalaseema
31. Tamilnadu, Puducherry & Karaikal
32. Coastal Karnataka
33. North Interior Karnataka
34. South Interior Karnataka
35. Kerala & Mahe
36. Lakshadweep

SPATIAL DISTRIBUTION (% of Stations reporting)

% Stations	Category	% Stations	Category
76-100	Widespread (WS/Most Places)	26-50	Scattered (SCT/A Few Places)
51-75	Fairly Widespread (FWS/Many Places)	1-25	Isolated (ISOL)

- | | | |
|----------------------|----------------------|--------------|
| Fog | Heavy Snow | Cold Wave |
| Heavy Rain | Dust Storm | Cold Day |
| Very Heavy Rain | Heat Wave | Ground Frost |
| Extremely Heavy Rain | Warm Night | |
| Thunder & Lightning | Hot Day | |
| Hailstorm | Hot & Humid | |
| Dust Raising Winds | Strong Surface Winds | |

COLOUR CODED WARNING

- No Warning (No Action)
- Watch (Be Aware)
- Alert (Be Prepared To Take Action)
- Warning (Take Action)

Probabilistic Forecast

Terms	Probability of Occurrence (%)
Unlikely	< 25
Likely	25 - 50
Very Likely	50 - 75
Most Likely	> 75

* Red colour warning does not mean "Red Alert", Red colour warning means "Take Action".
Forecast and Warning for any day is valid from 0830 hours IST of day till 0830 hours IST of next day.
For more details, kindly visit <https://mausam.imd.gov.in> or contact: 011-2434-4599
(Service to the Nation since 1875)

DEFINITION/CRITERIA

Rain/ Snow *	<p>Heavy: 64.5 to 115.5 mm/cm *</p> <p>Very Heavy: 115.6 to 204.4 mm/cm*</p> <p>Extremely Heavy: > 204.4 mm/cm *</p>
Heat Wave	<p>When maximum temperature of a station reaches $\geq 40^{\circ}\text{C}$ for plains and $\geq 30^{\circ}\text{C}$ for hilly regions</p> <p>(a) Based on Departure from normal</p> <p>Heat Wave: Maximum Temperature Departure from normal 4.5°C to 6.4°C.</p> <p>Severe Heat Wave: Maximum Temperature Departure from normal $\geq 6.5^{\circ}\text{C}$</p> <p>(b). Based on Actual maximum temperature</p> <p>Heat Wave: When actual maximum temperature $\geq 45^{\circ}\text{C}$.</p> <p>Severe Heat Wave: When actual maximum temperature $\geq 47^{\circ}\text{C}$</p> <p>(c). Criteria for heat wave for coastal stations</p> <p>When maximum temperature departure is $> 4.5^{\circ}\text{C}$ from normal. Heat Wave may be described provided maximum temperature $\geq 37^{\circ}\text{C}$</p>
Warm Night	<p>When maximum temperature remains 40°C</p> <p>Warm Night: When minimum temperature departure 4.5°C to 6.4°C.</p> <p>Severe Warm Night: When minimum temperature departure $> 6.4^{\circ}\text{C}$.</p>
Cold Wave	<p>When minimum temperature of a station $\leq 10^{\circ}\text{C}$ for plains and $\leq 0^{\circ}\text{C}$ for hilly regions.</p> <p>(a). Based on departure</p> <p>Cold Wave: Minimum Temperature Departure from normal -4.5°C to -6.4°C.</p> <p>Severe Cold Wave: Minimum Temperature Departure from normal $\leq -6.5^{\circ}\text{C}$</p> <p>(b) Based on actual Minimum Temperature (for Plains only)</p> <p>Cold Wave : When Minimum Temperature is $\leq 4.0^{\circ}\text{C}$</p> <p>Severe Cold Wave: When Minimum Temperature is $\leq 2.0^{\circ}\text{C}$</p> <p>(c) For Coastal Stations</p> <p>When Minimum Temperature departure is $\leq -4.5^{\circ}\text{C}$ & actual Minimum Temperature is $\leq 15^{\circ}\text{C}$</p>
Cold Day	<p>When minimum temperature of a station $\leq 10^{\circ}\text{C}$ for plains and $\leq 0^{\circ}\text{C}$ for hilly regions</p> <p>Based on departure</p> <p>Cold Day: Maximum Temperature Departure from normal -4.5°C to -6.4°C.</p> <p>Severe Cold Day: Maximum Temperature Departure from normal $\leq -6.5^{\circ}\text{C}$</p>
Fog	<p>Phenomenon of small droplets suspended in air and the horizontal visibility $< 1\text{km}$</p> <p>Moderate Fog: When the visibility between 500-200 metres</p> <p>Dense Fog: when the visibility between 50- 200 metres</p> <p>Very Dense Fog: when the visibility < 50 metres</p>
Thunderstorm	Sudden electrical discharges manifested by a flash of light (Lightning) and a sharp rumbling sound (thunder)
Dust/Sand Storm	An ensemble of particles of dust or sand energetically lifted to great heights by a strong and turbulent wind.
Frost	<p>Ice deposits on ground</p> <p>Air temperature $\leq 4^{\circ}\text{C}$ (over Plains)</p>
Squall	<p>A strong wind that rises suddenly, lasts for atleast 1 minute.</p> <p>Moderate: Wind speed 52-61 kmph</p> <p>Severe: Wind speed 62-67 kmph</p> <p>Very Severe: Wind speed > 67 kmph</p>
Sea State	<p>Effect of various waves in the sea over specific area</p> <p>Rough to very rough: Wind speed 41-62 kmph (22-33 knots) & Wave height 2.5-6 metre</p> <p>High to very high: Wind speed 63-117 kmph (34-63 knots) & Wave height 6-14 metre</p> <p>Phenomenal: Wind speed > 117 kmph (> 63 knots) & Wave height > 14 metre</p>
Cyclone	<p>Cyclonic Storm: Wind speed 62-67 kmph (34-47 knots)</p> <p>Severe Cyclonic Storm: Wind speed 88-117 kmph (48-63 knots)</p> <p>Very Severe Cyclonic Storm: Wind speed 118-165 kmph (64 - 89 knots)</p> <p>Extremely Severe Cyclonic Storm: Wind speed 166-220 kmph (90 -119 knots)</p> <p>Super Cyclone Storm: Wind speed > 220 kmph (> 119 knots)</p>

* Red colour warning does not mean "Red Alert", Red colour warning means "Take Action".
Forecast and Warning for any day is valid from 0830 hours IST of day till 0830 hours IST of next day.
For more details, kindly visit <https://mausam.imd.gov.in> or contact: 011-2434-4599
(Service to the Nation since 1875)